

# STAR WARS GALAXY'S EDGE

## DISNEYLAND — ANAHEIM, CALIFORNIA



Architect:

Disney Imagineering.

Contractor:

Southland Engineering

Representative:

Air Product Sales

The new Star Wars, Galaxy's Edge is a 14 acre expansion, making it the largest themed land expansion in the park's history. It will contain a life size Millennium Falcon, a Smugglers Run ride for guests to have an interactive experience flying the Falcon, and an interactive adventure called Rise of the Resistance where guests will chase and escape from Stormtroopers as well as coming face-to-face with Kylo Ren! Star Wars themed food and drinks will be a big part of the experience.

Pottorff supplied a vast array of our UL rated and air control products for this project.

**5**  
year  
warranty

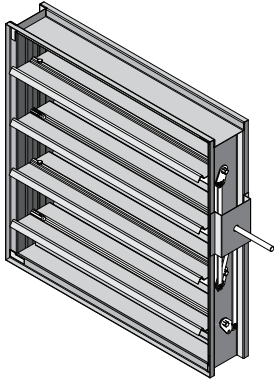


# POTTORFF®

[www.pottorff.com](http://www.pottorff.com)

# POTTORFF PRODUCTS SUPPLIED FOR STAR WARS GALAXY'S EDGE

## Control Dampers

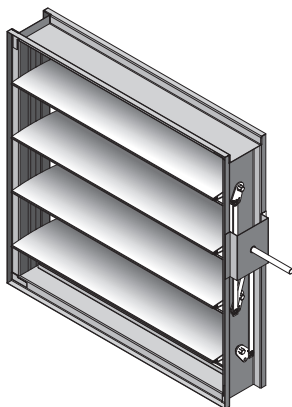


### CD-41/42

Triple-V Blade Control Damper

CD-41 and CD-42 dampers employ triple-V blades and a rugged hat channel frame for automatic air control and manual balancing in medium pressure and velocity applications. Available in parallel or opposed blade designs.

DAMPER WIDTH	MAXIMUM SYSTEM PRESSURE	MAXIMUM SYSTEM VELOCITY
12"	5.0 in. wg.	3000 fpm
24"	4.0 in. wg.	3000 fpm
36"	3.0 in. wg.	2500 fpm
48"	2.5 in. wg.	2000 fpm



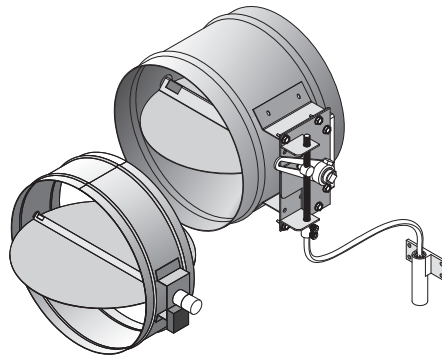
### CD-51/52

Airfoil Blade Control Damper

CD-51 and CD-52 control dampers employ aluminum airfoil blades and a rugged hat channel frame to provide extremely low leakage and exceptional air control in medium to high pressure and velocity applications.

DAMPER WIDTH	MAXIMUM SYSTEM PRESSURE	MAXIMUM SYSTEM VELOCITY
12"	10.0 in. wg.	6000 fpm
24"	8.4 in. wg.	5000 fpm
36"	6.1 in. wg.	4000 fpm
48"	5.3 in. wg.	3000 fpm
60"	3.1 in. wg.	3000 fpm

## Remotely Controlled Dampers



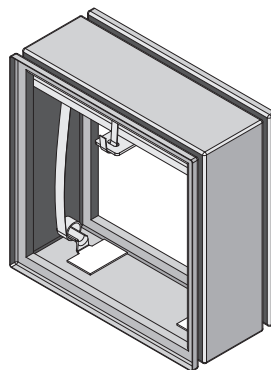
### RCS-10R and RD10R

Remotely Adjustable Control Dampers

The RCS-10R control dampers employ a single round blade and an integrated screw-drive assembly for remote cable operated manual air control and balancing in low pressure and velocity applications.

The RD-10R remote powered balancing dampers employ a single round blade and a 9VDC actuator for handheld remote air control and balancing. The RD-10R is maintenance free, easy to install, and requires no permanent power source. It is ideally suited for hard ceiling applications or any situation where access to manually adjust the damper is difficult.

## Dynamic Curtain Bladed Fire Dampers



### VFD-10D

1-1/2 Hour – Dynamic Curtain Style Blades

The VFD-10D fire damper employs curtain style blades for point-of-origin control of fire in static and dynamic HVAC systems. The VFD-10D is qualified to 4,000 ft/min and 4 in. wg. and may be installed in vertical walls or partitions, or horizontally in floors or assemblies with fire resistance ratings up to 2 hours.

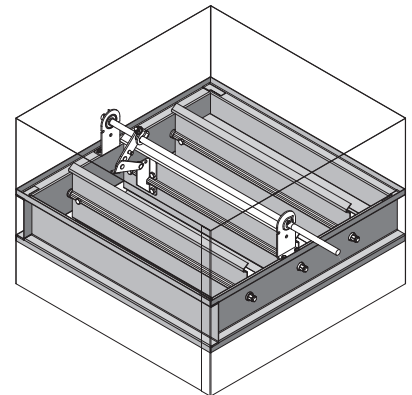
**UL 555 Fire Resistance Rating:** 1½ hour  
(vertical and horizontal)

**UL HNLJ.V-5:** Ventilation Duct Assemblies

**Maximum Dynamic Closure Velocity:** 4,000 fpm  
2,000 fpm

**Maximum UL555S Rated Pressure:** 4 in.wg.

## Combination Fire/Smoke Dampers



### FSD-151

1-1/2 Hour – Class 1 – Airfoil Blade

The FSD-151 combination fire smoke damper employs airfoil blades for point-of-origin control of fire and smoke in static and dynamic smoke management systems. The FSD-151 is qualified to 4,000 ft/min and 6 in. wg. and may be installed in vertical walls or partitions, horizontally in floors or assemblies with fire resistance ratings up to 2 hours.

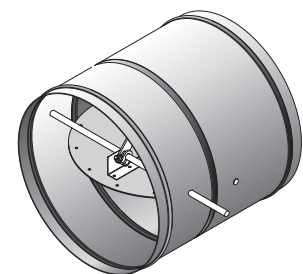
**UL 555 Fire Resistance Rating:** 1½ hour  
1 hour tunnel type

**UL 555S Leakage Class:** 2

**Maximum Dynamic Closure Velocity:** 2,000 fpm

**Maximum UL555S Rated Pressure:** 4 in. wg.

**Maximum Temperature:** 350°F



### FSD-125R

1-1/2 Hour – Class 1 – Round Blade

The FSD-125R combination fire smoke damper employs a single round blade for point-of-origin control of fire and smoke in static and dynamic smoke management systems. This unique damper comes standard with mounting plates for interface to round or square openings in masonry, metal stud, or wood stud assemblies and is ideal for all round duct applications.

**UL 555 Fire Resistance Rating:** 1½ hour

**UL 555S Leakage Class:** 1

**Maximum Dynamic Closure Velocity:** 3,000 fpm

**Maximum UL555S Rated Pressure:** 4 in. wg.

**Maximum Temperature:** 350°F